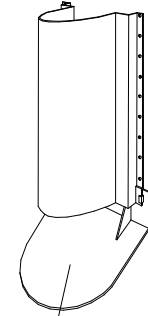
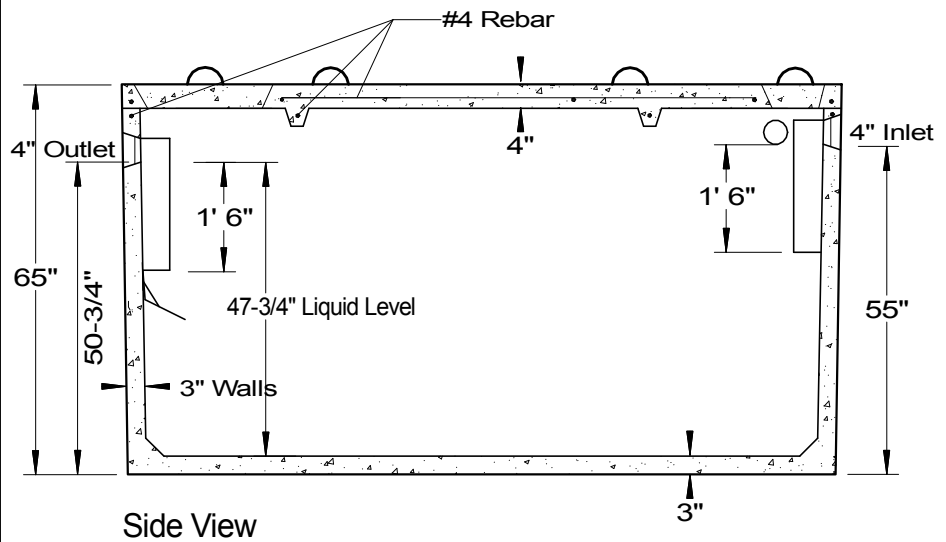
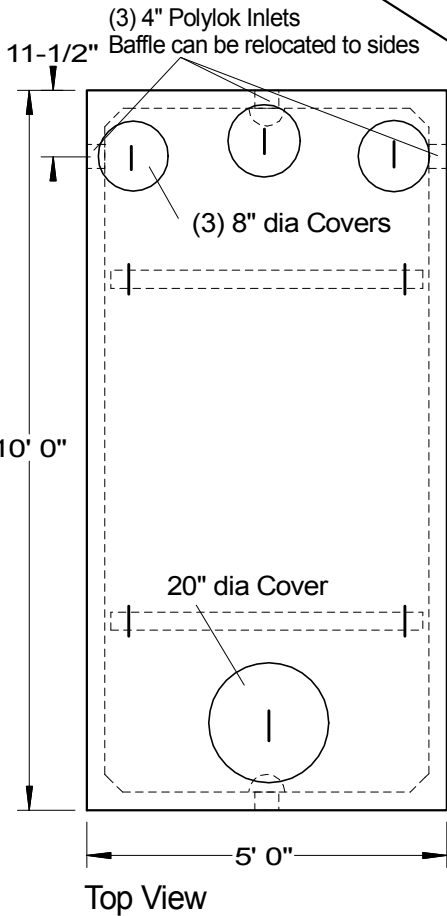


Baffle (deflector on outlet only)



Gas Deflector



SPECIFICATIONS	
<p>Concrete Min. Strength: 4,000 psi at 28 days Reinforcement: #4 bar gr. 60, Forta Ferro 5 lb/cy Air Entrainment: 6% Construction Joint: Butyl Rubber Sealant Pipe Connection: Polylok Seal (patented) Weight = 9,500 lbs Load Rating: 300 psf</p>	<p>PRECAST SEPTIC TANKS MODEL ST-1250 / 1250 GALLONS</p> <p>Woodard's Concrete Products, Inc. 629 Lybolt Road, Bullville, NY 10915 (845) 361-3471 / Fax 361-1050</p> <p>Page 3A 7/17/14</p>